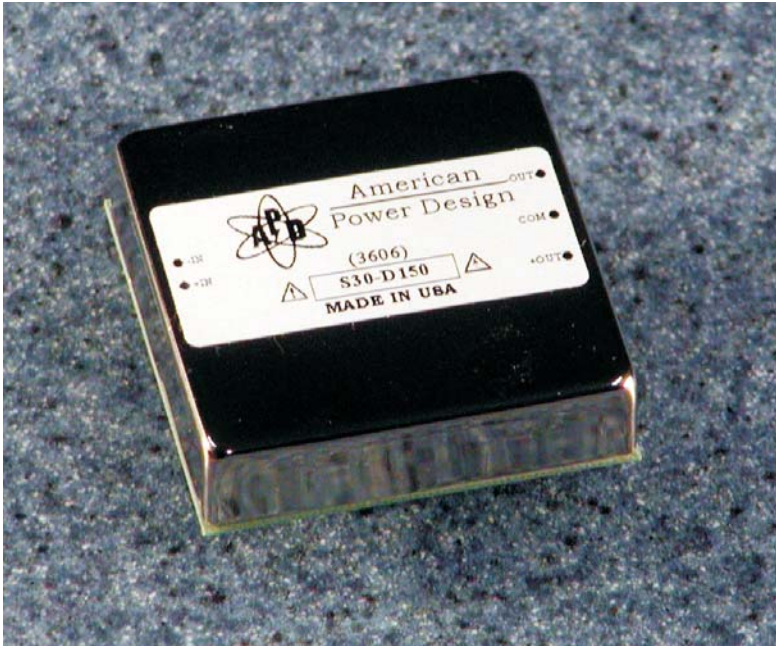




American Power Design, Inc.

"The best high voltage design solution"

S30 SERIES 30 WATT HIGH VOLTAGE DC/DC CONVERTERS



FEATURES

- * Customer Selects Output Voltage
- * Outputs to 1000 Vdc
- * High Power Density
- * Single and Dual Outputs
- * Ultra Wide Input Ranges
- * 1000 Vdc Output Isolation
- * Continuous Short Circuit Protection
- * Economical

The S30 Series low profile high voltage DC/DC converter offers a 1000 Vdc isolated single or dual high voltage output in a six-sided copper case. Their high power density, wide input, and excellent regulation make them ideally suited for applications that demand a high degree of performance. All models will tolerate a short circuit indefinitely.

ELECTRICAL SPECIFICATIONS

Voltage Accuracy	+/-5%	Input Filter	Low ESR Capacitor
Line Regulation	+/- 1%	Efficiency	85% (typ.)
Load Regulation	+/- 3% (20% to full load)	Short Circuit Protection	Continuous
Output Ripple	< 0.5%	Switching Frequency	120 kHz
		Isolation	1000 Vdc

* 20-60Vdc Input add suffix /B
 * 36-72Vdc Input add suffix /C

GENERAL SPECIFICATIONS

Temp. Stability	+/-0.02%/°C	EMI/RFI.....	Six Sided Shield
Temp. (Operating , Case)	-25 to +85°C	Derating	None
Temp. (Storage)	-40 to +125°C	Cooling	Free-Air Convection

* All models designed to meet UL 60950
 * For RoHS Compliant part, add suffix /Y

PHYSICAL SPECIFICATIONS

Dimensions	2 x 2 x 0.50 inches	Case Material	Nickel Plated Copper (With Non-Conductive Base Plate)
Weight	2.6 Oz		



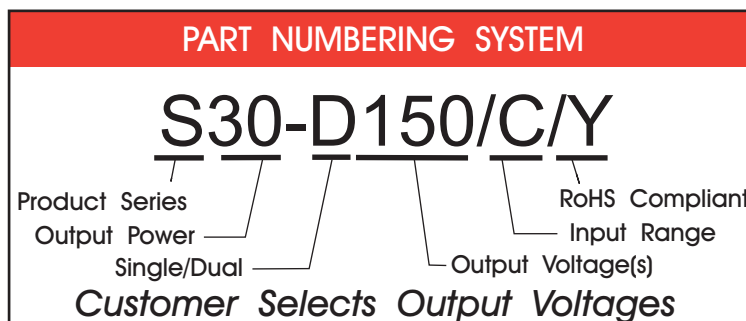
American Power Design, Inc.

"The best high voltage design solution"

S30 SERIES 30 WATT HIGH VOLTAGE DC/DC CONVERTERS

REPRESENTATIVE MODEL LISTING								
OUTPUT SPECIFICATIONS			MODEL NUMBER					
VOLTAGE	CURRENT		INPUT 9V - 36Vdc		INPUT 20V - 60Vdc		INPUT 36V - 72Vdc	
	Single	Dual	Single	Dual	Single	Dual	Single	Dual
24Vdc	1.25A	625mA	S30-S24	S30-D24	S30-S24/B	S30-D24/B	S30-S24/C	S30-D24/C
48Vdc	625mA	312mA	S30-S48	S30-D48	S30-S48/B	S30-D48/B	S30-S48/C	S30-D48/C
100Vdc	300mA	150mA	S30-S100	S30-D100	S30-S100/B	S30-D100/B	S30-S100/C	S30-D100/C
150Vdc	200mA	100mA	S30-S150	S30-D150	S30-S150/B	S30-D150/B	S30-S150/C	S30-D150/C
200Vdc	150mA	75mA	S30-S200	S30-D200	S30-S200/B	S30-D200/B	S30-S200/C	S30-D200/C
300Vdc	100mA	50mA	S30-S300	S30-D300	S30-S300/B	S30-D300/B	S30-S300/C	S30-D300/C
400Vdc	75mA	37mA	S30-S400	S30-D400	S30-S400/B	S30-D400/B	S30-S400/C	S30-D400/C
500Vdc	60mA	30mA	S30-S500	S30-D500	S30-S500/B	S30-D500/B	S30-S500/C	S30-D500/C
1000Vdc	30mA	N/A	S30-S1000	N/A	S30-S1000/B	N/A	S30-S1000/C	N/A

- * 20-60Vdc Input add suffix /B
- * 36-72Vdc Input add suffix /C
- * RoHS Compliant add suffix /Y

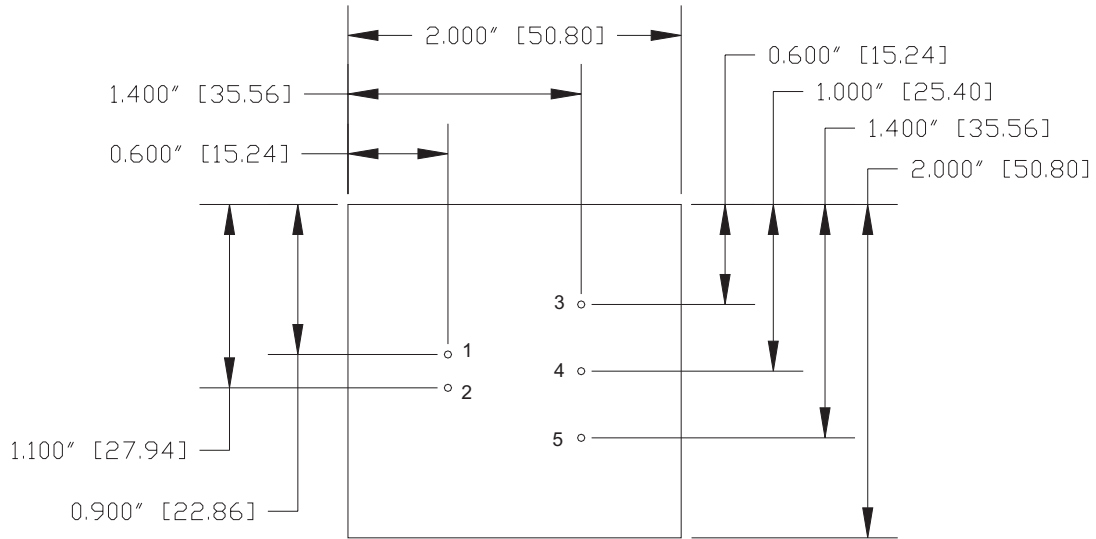




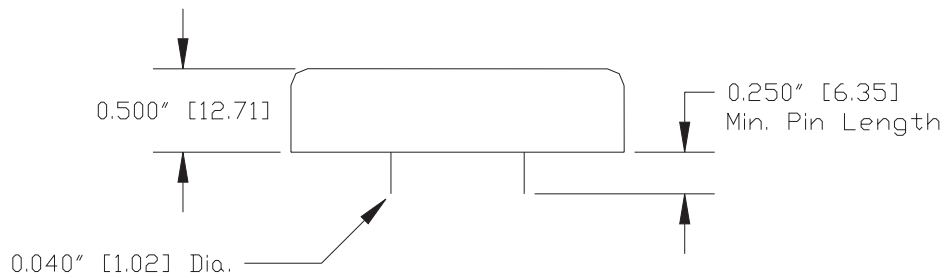
American Power Design, Inc.

"The best high voltage design solution"

S30 SERIES 30 WATT HIGH VOLTAGE DC/DC CONVERTERS



(Bottom View)



Pin #	Single	Dual
1	+ INPUT	+ INPUT
2	- INPUT	- INPUT
3	+ OUTPUT	+ OUTPUT
4	No Pin	COM
5	- OUTPUT	- OUTPUT

*Dimensions are in Inches
[Metric equivalents in brackets]*