



American Power Design, Inc.

"The best high voltage design solution"

A50 SERIES 50 WATT HIGH VOLTAGE DC/DC CONVERTERS



FEATURES

- * Customer Selects Output Voltage
- * Outputs from 48Vdc to 200 Vdc
- * Low Profile
- * High Regulation
- * High Power Density
- * 1000 Vdc Output Isolation
- * Continuous Short Circuit Protection
- * Economical

The A50 Series low profile high voltage DC/DC converter offers a highly regulated high voltage isolated output in a six-sided copper case. Their small size, high power density, and excellent regulation make them ideally suited for applications that demand a high degree of performance. All models will tolerate a short circuit indefinitely.

ELECTRICAL SPECIFICATIONS

Voltage Accuracy	+/-1%	Input Filter	Low ESR Capacitor
Line Regulation	+/- 0.3%	Efficiency	87% (typ.)
Load Regulation	+/- 0.5%	Short Circuit Protection	Continuous
Output Ripple	< 0.5% P-P	Switching Frequency	120 kHz
		Isolation	1000 Vdc

* 18-36Vdc Input add suffix /A
 * 36-72Vdc Input add suffix /C

GENERAL SPECIFICATIONS

Temp. Stability	+/-0.02%/°C	EMI/RFI.....	Six Sided Shield
Temp. (Operating , Case)	-25 to +70°C	Derating	None
Temp. (Storage)	-40 to +125°C	Cooling	Free-Air Convection

* All models designed to meet UL 60950
 * For RoHS Compliant part, add suffix /Y

PHYSICAL SPECIFICATIONS

Dimensions	2 x 2 x 0.50 inches	Case Material	Nickel Plated Copper (With Non-Conductive Base Plate)
Weight	2.8 Oz		



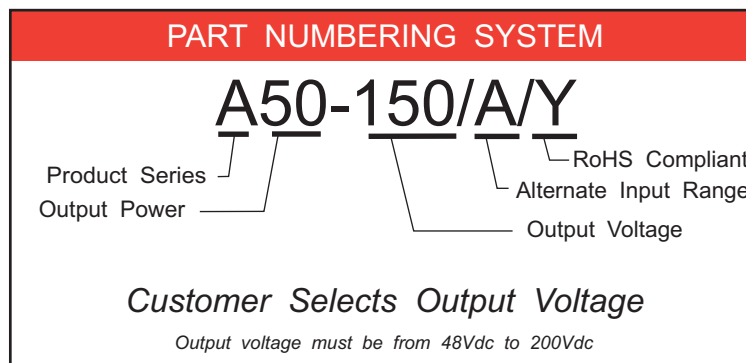
American Power Design, Inc.

"The best high voltage design solution"

A50 SERIES 50 WATT HIGH VOLTAGE DC/DC CONVERTERS

REPRESENTATIVE MODEL LISTING				
OUTPUT SPECIFICATIONS		MODEL NUMBER		
OUTPUT VOLTAGE	OUTPUT CURRENT	INPUT RANGE		
		10-20Vdc	18-36Vdc	36-72Vdc
48 Vdc	1 A	A50-48	A50-48/A	A50-48/C
75 Vdc	666 mA	A50-75	A50-75/A	A50-75/C
100 Vdc	500 mA	A50-100	A50-100/A	A50-100/C
120 Vdc	416 mA	A50-120	A50-120/A	A50-120/C
140 Vdc	357 mA	A50-140	A50-140/A	A50-140/C
150 Vdc	333 mA	A50-150	A50-150/A	A50-150/C
160 Vdc	312 mA	A50-160	A50-160/A	A50-160/C
180 Vdc	277 mA	A50-180	A50-180/A	A50-180/C
200 Vdc	250 mA	A50-200	A50-200/A	A50-200/C

- * 18-36Vdc Input add suffix /A
- * 36-72Vdc Input add suffix /C
- * RoHS Compliant add suffix /Y

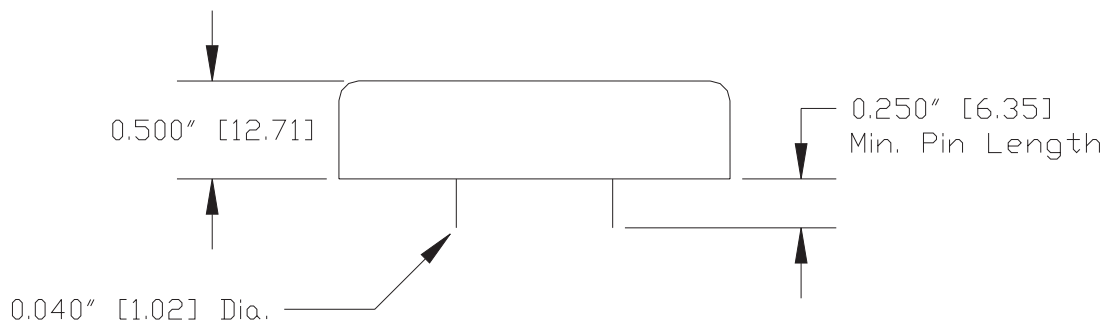
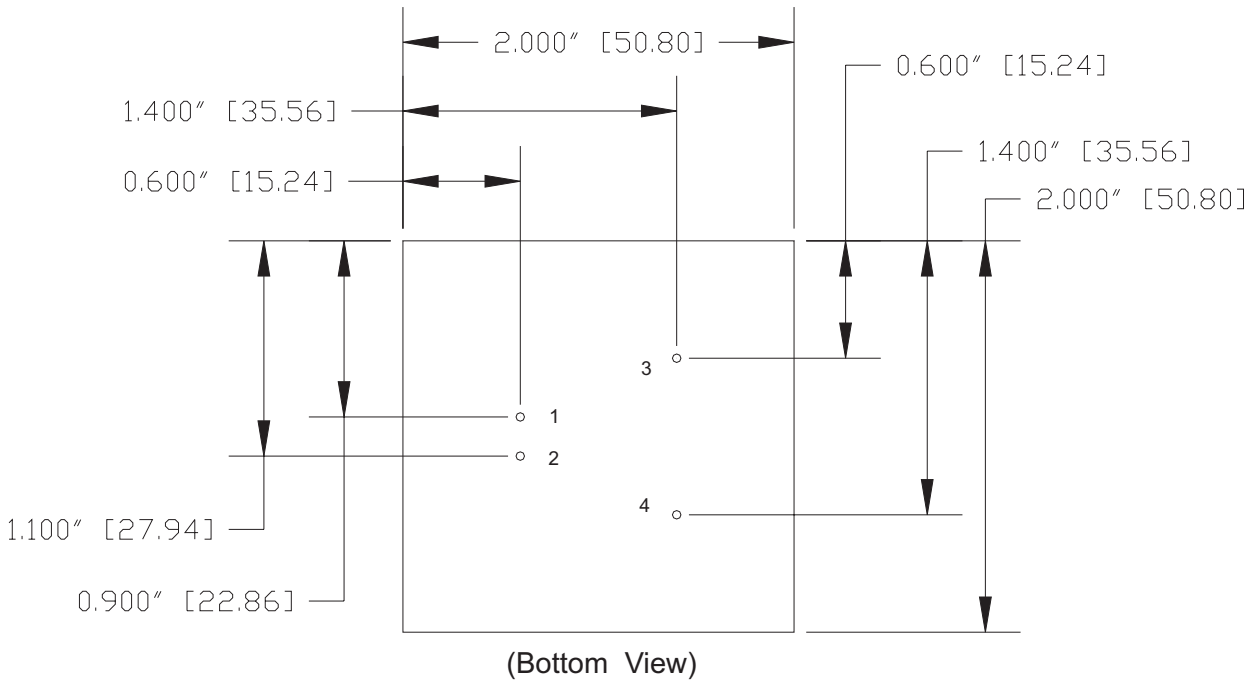




American Power Design, Inc.

"The best high voltage design solution"

A50 SERIES 50 WATT HIGH VOLTAGE DC/DC CONVERTERS



Pin #	Single
1	+ INPUT
2	- INPUT
3	+ OUTPUT
4	- OUTPUT

*Dimensions are in Inches
[Metric equivalents in brackets]*